

# Explosion Proof Pressure Switches (951P Series)

## Applications

- Paper and food industry
- Shock & vibration application
- Corrode suspended solid
- Vicious or frozen medium
- Chemical & petrochemical
- Pumps, compressors and regulators
- Refining & marine industry

## Operating Temperature

- Ambient : -30 ~ 100°C
- Media (Fluid) : + 100°C maximum



## Standard Specification Overview

### Repeatability

- $\pm 1.5\%$  of Full Scale

### Scale Ranges

- 0.1 ~ 10 MPa

\* For more information, see the ordering information table.

### Dead Band

- Fixed (3 ~ 10% of Full Scale) Adjustable - Open

### Process Connection

- PF ("G" in ISO) 3/8", PT ("R" in ISO) 1/2"

### Material

- Case & Cover : Gray Finished & Epoxy Coated Aluminium
- Element (Diaphragm) : 316L SS
- Wetted Parts : 316 SS
- Packing : NBR, Viton

### Conduit Connection

- PF 1/2"

### Degree of Protection

- IP 65

### Switch Contacts

- AC 125V, 15A / 250V, 15A
- DC 30V, 2A / 125V 0.4A / 250V, 0.2A

### Approvals

- Ex d IIC T6

### Optional Extra

- Test Report by Manufacturer
- Test Report by KOLAS (ILAC-MRA)
- Material Certificate (Mill Sheet)
- Mounting Bracket

## Special Notes

1. Other Process Connections are available as option.

## Ordering Information for 951P Series

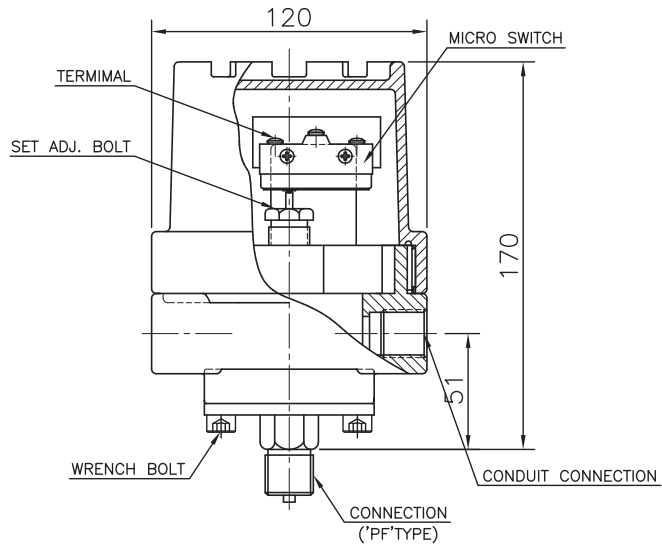
● = Standard Products   ▲ = Available   NA = Not Available

Model	Description	Case & Cover	Wetted Parts
951P	Explosion Proof Pressure Switches (Blind)	Gray Finished & Epoxy Coated Aluminium	316 SS
<b>Code</b>	<b>Dial Size</b>	<b>Repeatability</b>	
GP	Pressure Type	± 1.5% of F.S	
<b>Code</b>	<b>Mounting Type</b>		<b>GP</b>
A	Bottom Connection without Mounting Flange		●
<b>Code</b>	<b>Process Connection Style</b>		<b>GP</b>
2	PT ("R" in ISO Standard)		▲
3	PF ("G" in ISO Standard)		▲
4	NPT		●
X	Others		☉
<b>Code</b>	<b>Process Connection Size</b>		<b>GP</b>
D	3/8"		▲
F	1/2"		▲
<b>Code</b>	<b>Pressure Range</b>		<b>GP</b>
171	300 ~ 2000 mm		●
173	10 ~ 70 kPa		●
176	20 ~ 100 kPa		●
178	30 ~ 200 kPa		●
177	20 ~ 200 kPa		●
179	30 ~ 300 kPa		●
183	50 ~ 500 kPa		●
185	0.1 ~ 1.0 MPa		●
186	0.1 ~ 2.0 MPa		●
187	0.2 ~ 2.5 MPa		●
188	0.3 ~ 3.0 MPa		●
189	0.5 ~ 6.0 MPa		●
190	1 ~ 10 MPa		●
* kPa, MPa (SI Unit) is the standard dial scale but others are available upon request.			
<b>Code</b>	<b>Contact Location</b>		<b>GP</b>
S1	One SPDT (Single Change - Over Contact)		●
D1	One DPDT (Double Change - Over Contact)		●
<b>Code</b>	<b>Applicable Accessory Options</b>		
J0	Not Apply		
J1	Adapter		
J2	Gauge Unions		
J3	Syphon Tubes		
J4	Pulsation Dampeners		
J5	Pressure Snubber		
J7	Gauge Savers (Gauge Protectors)		
J8	Safety Kloser		
J9	Manifold Valves		

Code	Options	GP
Test Reports		
T1	Test Report by Manufacturer	▲
T2	Test Report by KOLAS (ILAC-MRA)	▲
Other Option		
M1	Material Certificate (Mill Sheet)	▲
M2	Mounting Bracket	▲
Sample Model Selection : 951PGP2F173S1J0		
* The standard specification and price are subject to change without prior notice.		

## Explosion Proof Pressure Switches (951P Series)

### TYPE-GP



[UNIT : mm]

Code	Dial Size	(Available Type)
GP	Round Shape	A

**HISCO** HISCO, INC.

32, Seonyu-ro 43-gil, Yeongdeungpo-gu, Seoul, Korea  
 T : 82-2-2677-6046 F : 82-2-2672-1873 <http://www.hiscoi.com>