

# Industrial Process Liquid Filled Pressure Gauges (GB Series)

<HSI>

Pressure/ Temperature Instrument

## Summary

- 충격 및 진동 적용
- 내식성, 내마모성
- 화학 및 석유 화학
- 발전, 펌프, 컴프레서 및 레귤레이터
- 정제 및 해양 산업
- 해수 적용 (모넬)

## Standard features

### Diameter

60, 75, 100, 150, and 200mm

### Accuracy

60,75mm :  $\pm 1.5\%$  of Full Scale

100,150,200mm :  $\pm 1.0\%$  of Full Scale

### Scale Range

60,75mm : -0.1 ~ 2 MPa, 0 ~ 35 MPa

100,150mm : -0.1 ~ 2 MPa, 0 ~ 200 MPa

200mm : -0.1 ~ 2 MPa, 0 ~ 100 MPa

### Process connection

60,75mm : PT,PF,NPT - 1/4", UNF

100mm : PT,PF,NPT - 3/8", 1/2", UNF

150mm,200mm : PT,PF - 3/8", UNF

### Material

Case, Cover : STS 304

Window : Safety Glass

Connection : STS 316

Element : STS 304, 316

Movement : STS304

Filling Liquid: Silicon Oil, Glycerine Oil

## GB Series (Type A)



Pressure Gauge

Temperature Gauge

Temperature Element

## Pressure Limitation

Steady : 3/4 of full scale (75%)

Fluctuating : 3/5 of full scale (60%)

## Operating Temperature

Ambient : -20 ~ 65°C

Media(Fluid) : -20 ~ 40°C

## Option

Test Report by Manufacturer

Test Report by KOLAS

USE NO OIL

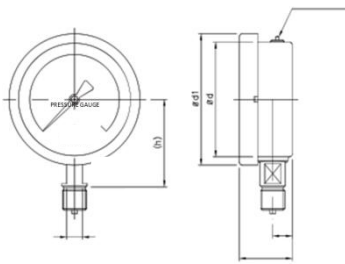
# Industrial Process Liquid Filled Pressure Gauges (GB Series)



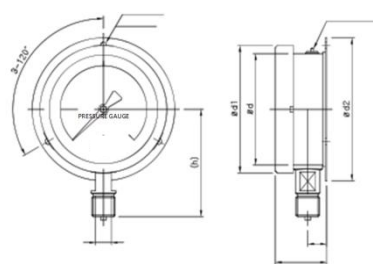
Pressure/ Temperature Instrument

## Type of Mounting

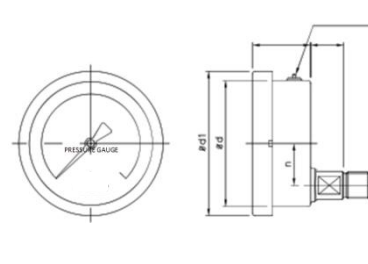
TYPE - A



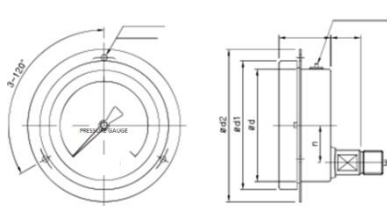
TYPE - B



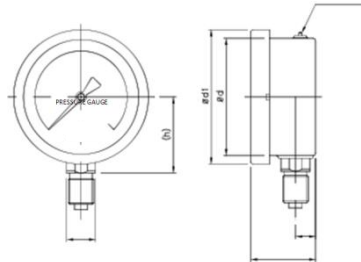
TYPE - L



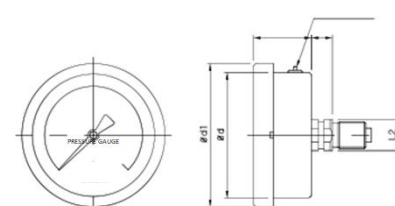
TYPE - BL



TYPE - A-2



TYPE - D



Pressure Gauge

Temperature Gauge

Temperature Element

Dial	Model	Ød	Ød1	Ød2	b	n	t	L1	H	Øh	Ød
60	A,B	64	72	84	12	-	39	12	48	4.5	72
	L,BL			90	-	17			20		81
75	A,B	77	87	100	14	-	40	14	54	4.5	88
	L,BL			107	-	22			17		97
100	A,B	100	114	128	17	-	46	17	76	5.5	115
	L,BL			135	-	33			26		120
150	A,B	152	168	188	17	-	50	17	100	5.5	174
	L,BL				-	33			26		
200	B	208	220	250	20		58	17	130	5.5	235

# Industrial Process Liquid Filled Pressure Gauges / DIN (GB-DIN Series)

# <HSI>

Pressure/ Temperature Instrument

## Summary

- 충격 및 진동 적용
- 내식성, 내마모성
- 화학 및 석유 화학
- 발전, 펌프, 컴프레서 및 레귤레이터
- 정제 및 해양 산업
- 해수 적용 (모델)

## Standard features

### Diameter

63, 80, 100 and 160mm

### Accuracy

63, 80mm :  $\pm 1.6\%$  of Full Scale  
100, 160mm :  $\pm 1.0\%$  of Full Scale

### Scale Range

63, 80mm : -0.1 ~ 2 MPa, 0 ~ 25 MPa  
100, 160mm : -0.1 ~ 2 MPa, 0 ~ 200 MPa

### Process connection

63mm : PT, PF, NPT - 1/4", UNF  
80mm : PT, PF, NPT - 3/8", UNF  
100mm : PT, PF, NPT - 3/8", 1/2", UNF  
160mm : PT, PF, NPT - 3/8", 1/2", UNF

### Material

Case, Cover : STS 304  
Window : Safety Glass  
Connection : STS 316  
Element : STS 304, 316  
Movement : STS304  
Filling Liquid: Silicon Oil, Glycerine Oil

## GB-DIN Series (Type A)



Pressure Gauge

Temperature Gauge

Temperature Element

## Pressure Limitation

Steady : 3/4 of full scale (75%)  
Fluctuating : 3/5 of full scale (60%)

## Operating Temperature

Ambient : -20 ~ 65°C  
Media(Fluid) : -20 ~ 40°C

## Option

Test Report by Manufacturer  
Test Report by KOLAS  
USE NO OIL

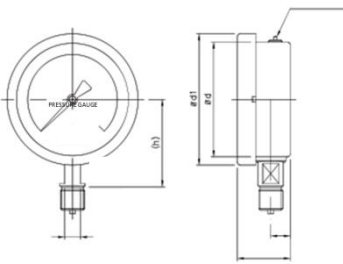
# Industrial Process Liquid Filled Pressure Gauges / DIN (GB-DIN Series)



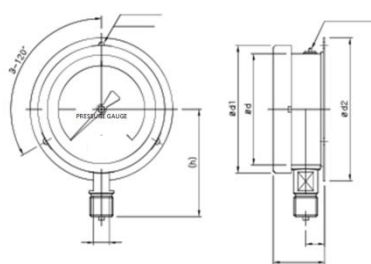
Pressure/Temperature Instrument

## Type of Mounting

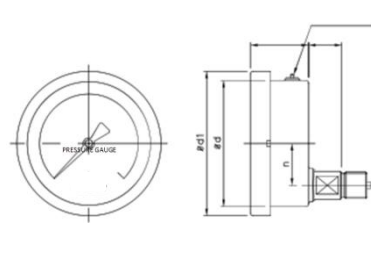
**TYPE - A**



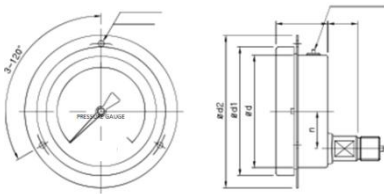
**TYPE - B**



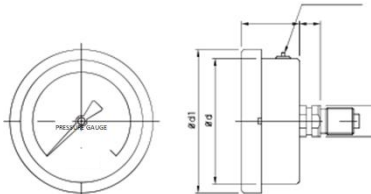
**TYPE - L**



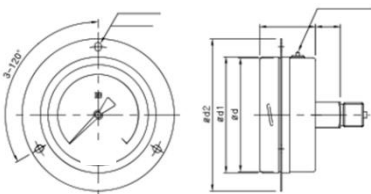
**TYPE - BL**



**TYPE - D**



**TYPE - BD**



Pressure Gauge

Temperature Gauge

Temperature Element

Dial	Model	Ød	Ød1	Ød2	b	n	t	L1	H	Øh	Ød
63	A,B	61.5	63.6	85	9	-	33	14	40.5	4.5*6.5	75
	B,BD			92	-	-			12.5		78
80	A,B	77.5	79.5	112	13	-	40	17	53	4.5*6.5	95
	L,BL			-	22	16					
100	A,B	98.7	100.5	132	15	-	48.5	22	66.5	5.5*8	118
	L,BL			-	32	20.5					
160	A,B	157.5	160	192	17	-	51	22	102	5.8*8	178
	L,BL			-	48	20					