

Industrial Process Pressure Gauges (WP Series)

<HSI>

Pressure/ Temperature Instrument

Summary

- 내식성, 내마모성
- 화학 및 석유 화학
- 부식, 증기가 많은 실외
- 발전, 펌프, 컴프레서 및 레귤레이터
- 정제 및 해양 산업
- 해수 적용 (모델)

Standard features

Diameter

40,50, 60, 75, 100, 150, and 200mm

Accuracy

40mm : $\pm 3.0\%$ of Full Scale
50,60,75mm : $\pm 1.5\%$ of Full Scale
100,150,200mm : $\pm 1.0\%$ of Full Scale

Scale Range

40,50mm : -0.1 ~ 2 MPa, 0 ~ 35 MPa
60,75mm : -0.1 ~ 2 MPa, 0 ~ 35 MPa
100,150mm : -0.1 ~ 2 MPa, 0 ~ 200 MPa
200mm : -0.1 ~ 2 MPa, 0 ~ 100 MPa

Process connection

60mm : PT,PF,NPT - 1/8"
50mm : PT,PF,NPT - 1/4", UNF
60mm : PT,PF,NPT - 1/4", UNF
75mm : PT,PF,NPT - 3/8", UNF
100mm : PT,PF,NPT - 3/8", 1/2", UNF
150mm,200mm : PT,PF - 3/8", UNF

Material

Case, Cover : STS 304
Window : Safety Glass
Connection : STS 316
Element : STS 304, 316
Movement : STS304

WP Series (Type A)



Pressure Gauge

Temperature Gauge

Temperature Element

Pressure Limitation

Steady : 3/4 of full scale (75%)
Fluctuating : 3/5 of full scale (60%)

Operating Temperature

Ambient : -20 ~ 65°C
Media(Fluid) : -20 ~ 40°C

Option

Test Report by Manufacturer
Test Report by KOLAS
USE NO OIL

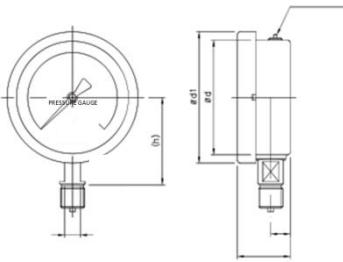
Industrial Process Pressure Gauges (WP Series)

<HSI>

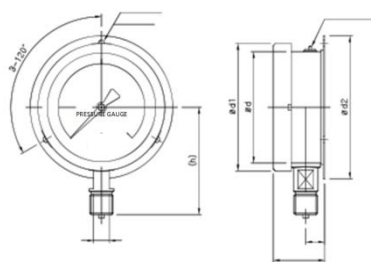
Pressure/ Temperature Instrument

Type of Mounting

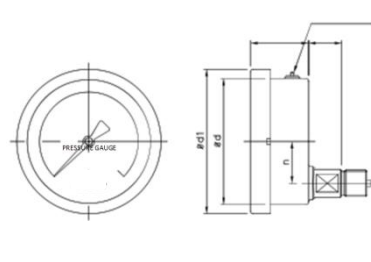
TYPE - A



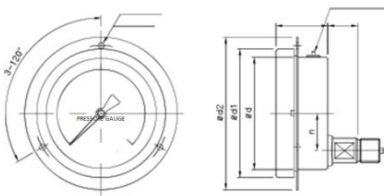
TYPE - B



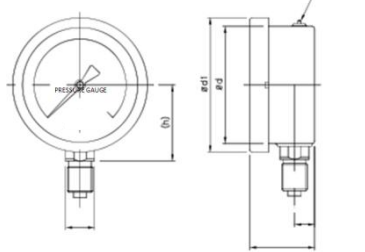
TYPE - L



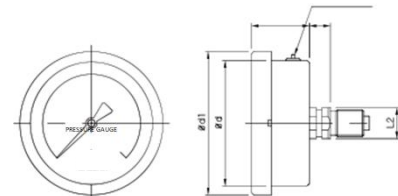
TYPE - BL



TYPE - A-2



TYPE - D



Pressure Gauge

Temperature Gauge

Temperature Element

Dial	Model	Ød	Ød1	Ød2	b	n	t	L1	h	Øh	Ød
40	A2	41	46.2	-	7.5	-	26.5	12	26.5	-	-
	D			-	-	7.5					
50	A2	51.7	58.2	-	9.5	-	30	14	35.5	-	-
	A,B			-	-	7.5					
60	A,B	64	72	84	12	-	39	12	48	4.5	72
	L,BL			90	-	17			20		81
75	A,B	77	87	100	14	-	40	14	54	4.5	88
	L,BL			107	-	22			17		97
100	A,B	100	114	128	17	-	46	17	76	5.5	115
	L,BL			135	-	33			26		120
50	A,B	152	168	188	17	-	50	17	100	5.5	174
	L,BL			-	33	26					
200	B	208	220	250	20	-	58	17	130	5.5	235

Industrial Process Pressure Gauges / DIN (WP-DIN Series)

<HSI>

Pressure/ Temperature Instrument

Summary

- 내식성, 내마모성
- 화학 및 석유 화학
- 부식, 증기가 많은 실외
- 발전, 펌프, 컴프레서 및 레귤레이터
- 정제 및 해양 산업
- 해수 적용 (모델)

Standard features

Diameter

63, 80, 100 and 160mm

Accuracy

63, 80mm : $\pm 1.6\%$ of Full Scale
100, 160mm : $\pm 1.0\%$ of Full Scale

Scale Range

63, 80mm : -0.1 ~ 2 MPa, 0 ~ 25 MPa
100, 150mm : -0.1 ~ 2 MPa, 0 ~ 200 MPa

Process connection

63mm : PT, PF, NPT - 1/4", UNF
80mm : PT, PF, NPT - 8/3", UNF
100mm : PT, PF, NPT - 3/8", 1/2", UNF
160mm : PT, PF, NPT - 3/8", 1/2", UNF

Material

Case, Cover : STS 304
Window : Safety Glass
Connection : STS 316
Element : STS 304, 316
Movement : STS304

WP-DIN Series (Type A)



Pressure Gauge

Temperature Gauge

Temperature Element

Pressure Limitation

Steady : 3/4 of full scale (75%)
Fluctuating : 3/5 of full scale (60%)

Operating Temperature

Ambient : -20 ~ 65°C
Media (Fluid) : -20 ~ 40°C

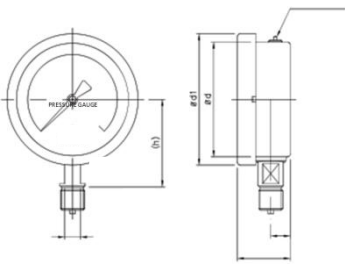
Option

Test Report by Manufacturer
Test Report by KOLAS
USE NO OIL

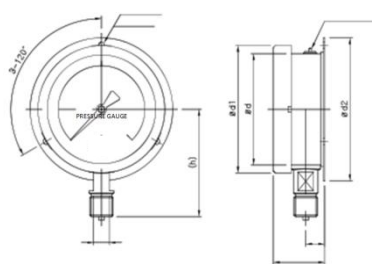
Industrial Process Pressure Gauges (WP Series)

Type of Mounting

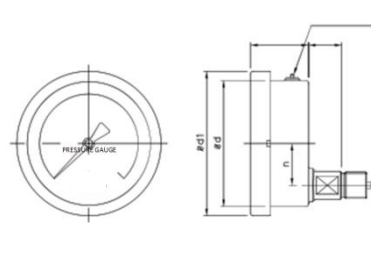
TYPE - A



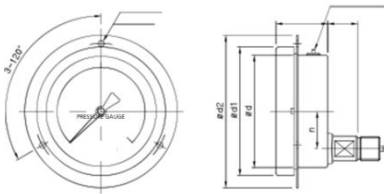
TYPE - B



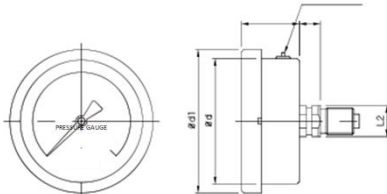
TYPE - L



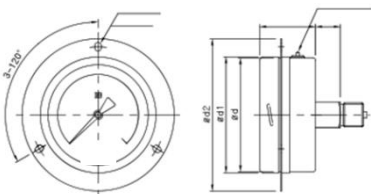
TYPE - BL



TYPE - D



TYPE - BD



Dial	Model	Ød	Ød1	Ød2	b	n	t	L1	H	Øh	Ød
63	A,B	61.5	63.6	85	9	-	33	14	40.5	4.5*6.5	75
	B,BD			92	-	-			12.5		78
80	A,B	77.5	79.5	112	13	-	40	17	53	4.5*6.5	95
	L,BL			-	22	16					
100	A,B	98.7	100.5	132	15	-	48.5	22	66.5	5.5*8	118
	L,BL			-	32	20.5					
160	A,B	157.5	160	192	17	-	51	22	102	5.8*8	178
	L,BL			-	48	20					

Pressure Gauge

Temperature Gauge

Temperature Element