

# General Service Bimetal Thermometer (121T)

## Applications

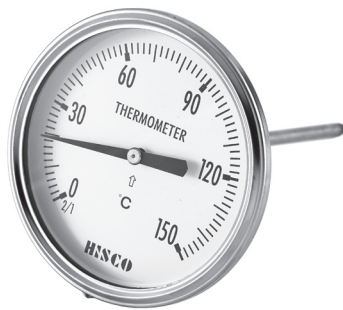
- Providing economical and reliable service
- Non-corrosive media such as Gas, Oil or Water
- Machine and plant engineering
- Piping, pressure vessels and industrial heating

## Temperature Element

- Coiled bimetal

## Working Range

- Maximum scale value



## Standard Specification Overview

### Dial Size

- 75mm, 100mm

### Reference Accuracy

- $\pm 2.0\%$  of Full Scale

### Scale Ranges

- $-50 \sim 0 \sim 650^{\circ}\text{C}$

\* For more information, see the ordering information table.

### Process Connection

- PT ("R" in ISO) 1/4", 1/2"

### Material

- Case : Stainless Steel
- Ring (Cover) : Stainless Steel
- Connection : chrome Plated Brass
- Stem : 304 SS
- Window : Glass
- Dial : White Aluminum with Black Graduations
- Pointer : Aluminum Alloy, Black Finished

### Optional Extra

- Test Report by Manufacturer
- Test Report by KOLAS (ILAC-MRA)
- Connection Material (304 SS)
- OEM Service for a specific customer

## Ordering Information for 121T

● = Standard Products   ▲ = Available   NA = Not Available

Model	Description	Case & Ring	Connection / Stem	
121T	General Service Bimetal Thermometer	C.S. (Slip-on-fit)	Chrome Plated Brass / 304 SS	
<b>Code</b>	<b>Dial Size</b>	<b>Accuracy</b>	<b>121T</b>	
30	75mm	±2.0% of Full Scale	●	
40	100mm	±2.0% of Full Scale	●	
60	150mm	±2.0% of Full Scale	●	
<b>Code</b>	<b>Mounting Type</b>		<b>30</b>	<b>40</b>
D	Center Back Connection Stem Mounting		●	●
<b>Code</b>	<b>Process Connection Style</b>		<b>30</b>	<b>40</b>
2	PT ("R" in ISO Standard)		●	●
3	PF ("G" in ISO Standard)		▲	▲
4	NPT		▲	▲
0	Others		☞	☞
<b>Code</b>	<b>Process Connection Size</b>		<b>30</b>	<b>40</b>
C	1/4"		▲	▲
D	3/8"		▲	▲
F	1/2"		●	●
X	Others		☞	☞
<b>Code</b>	<b>Range</b>		<b>30</b>	<b>40</b>
XXX	Refer to the Temperature Range Code Table		●	●
<b>Code</b>	<b>Sensor (Stem) Outer Diameter</b>		<b>30</b>	<b>40</b>
M6	6.4mm		▲	▲
M8	8.0mm		▲	▲

Please request for other size of stem out Diameter.

<b>Code</b>	<b>Sensor (Stem) Length</b>			
0075	75mm			
0100	100mm			
0150	150mm			
XXXX	Other (specify the length in mm or inch)			

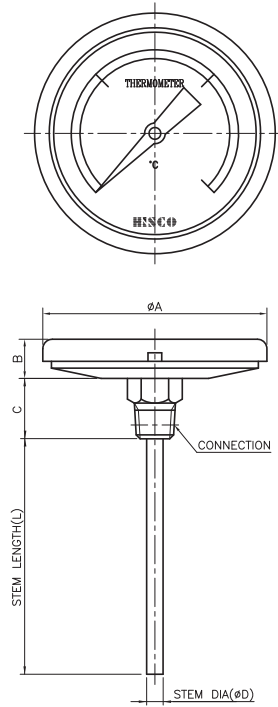
<b>Code</b>	<b>Applicable Accessory Options</b>		<b>30</b>	<b>40</b>
W1	With Thermowell (Refer to the accessory model 100)		▲	▲
J1	Swivel Nut		▲	▲
J2	Compression Fitting		▲	▲
J3	Adjustable Union		▲	▲
J4	Screw Union for 3/4"		▲	▲
J0	Not Apply		●	●

<b>Code</b>	<b>Other Options</b>		<b>30</b>	<b>40</b>
Test Reports				
T1	Test Report by Manufacturer		▲	▲
T2	Test Report by KOLAS (ILAC-MRA)		▲	▲
Other Option				
CM	Connection Material (304 SS)		▲	▲
OE	OEM Service for a specific customer		▲	▲

Sample Model Selection : 121T40D2F117M60100J0

\* The standard specification and price are subject to change without prior notice

## General Service Bimetal Thermometer (121T)



[UNIT : mm]

Code	Dial Size	A	B	C
30	φ75	87	17	30
40	φ100	111	18	30
60	φ150	168	27	30

**HISCO** HISCO, INC.

15-5, Yangpyeong-dong, 4-ga, Yeongdeungpo-gu, 150-866 Seoul, Korea  
 T : 82-2-2677-6046 F : 82-2-2672-1873 <http://www.hisco.com>